

# NEXA SPA



[www.nexalife.com](http://www.nexalife.com)

950 Sunshine Lane Altamonte Springs, FL 32714

866-322-POOL (7665) FAX-407-865-5847

Dear Customer,

Thank you for purchasing the Nexa Spa Natural Chlorine Generator. Please read the **Safety Precautions** below before the installation and operation tasks.

### **Safety Precautions**

**A Warning** that is not strictly observed could result in **INJURY, DEATH OR LONG TERM HEALTH HAZARDS**.

**A Caution** that is not strictly observed could result in **damage or destruction of equipment**.

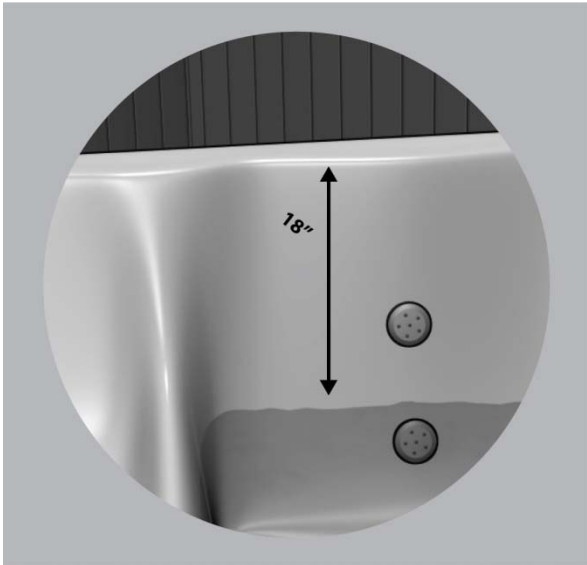
#### **Warning:**

- **Do not connect the unit to an AC power source until installation is completed.**
- **DO NOT USE EXTENSION CORDS.**
- **Make sure that the cord that plugs into an outlet is protected by a ground fault circuit interrupter (GFCI).**
- **Do not use the unit if it is damaged in any way.**
- **Do not operate the unit with a damaged power cord, power pack or cell.**
- **Do not place the power pack in water or any other liquid.**
- **Place the power pack on a flat surface or on a wall at a distance of at least 10 ft. from the spa.**
- **Make sure that the unit is unplugged from its power supply before performing any maintenance.**
- **Nexa Spa is a chlorine generator that must not be touched or handled by children.**

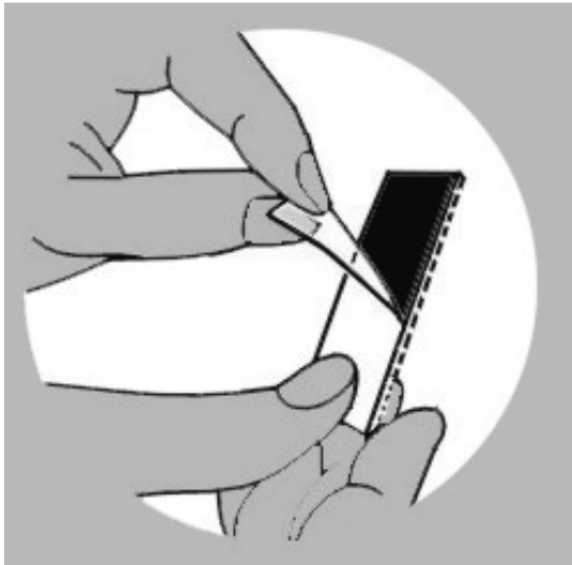
#### **Caution:**

- Do not open the cell or power supply. All repairs must be performed by the manufacturer.
- To prevent damage to the cord or power pack, never carry the power pack by the cord or pull the cord to disconnect the power pack. Instead, pull the plug from the power outlet to disconnect. Do not pull the cord around sharp corners or edges.
- In temperatures of 40°C (104°F) or higher, shade the power pack from direct sunlight.
- Ensure that equipment and materials used in or around spa are compatible with salt-based sanitization systems.

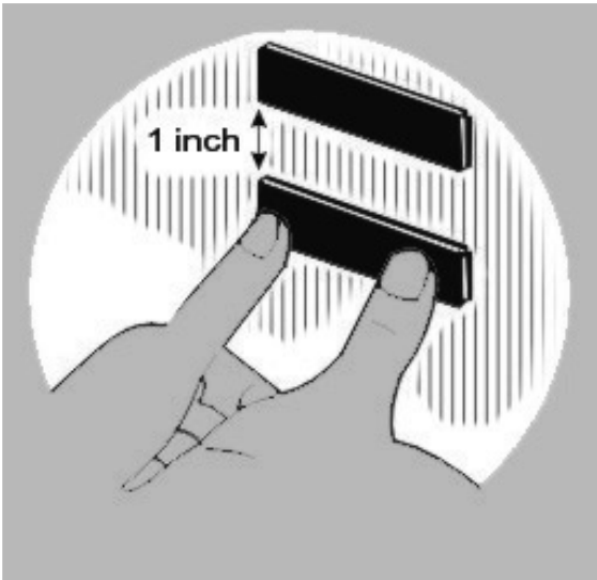
# Quick Start Guide



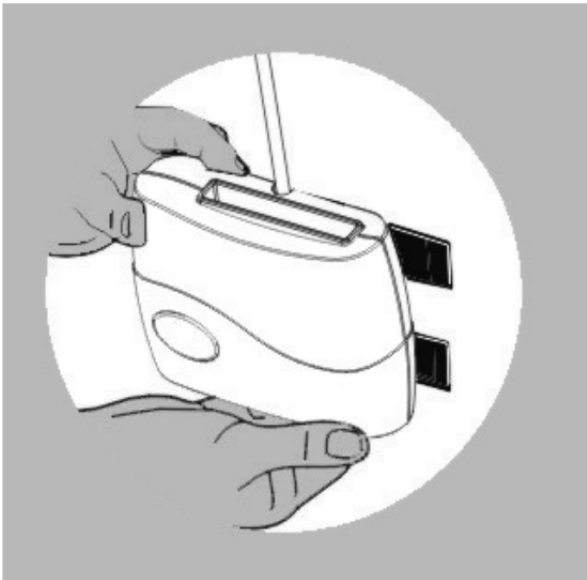
Lower the water 18". Dry an area near the center fold of the spa cover.



Remove backing from Dual Lock Strips



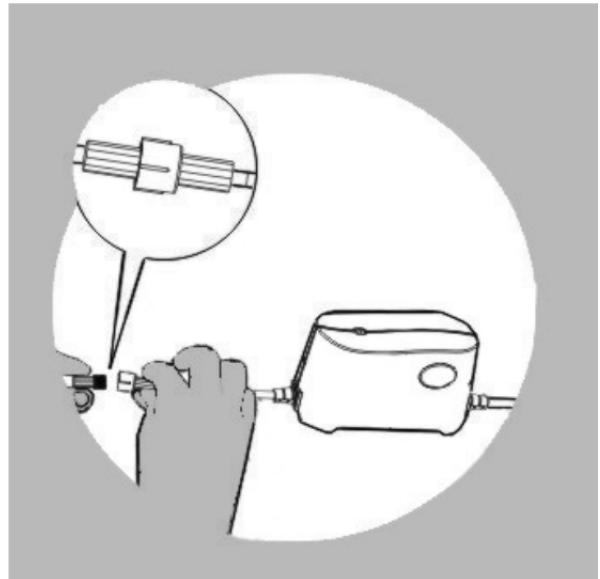
Place Strips 1" apart, 18" down from top of spa. (min 12inch of water over top of cell)



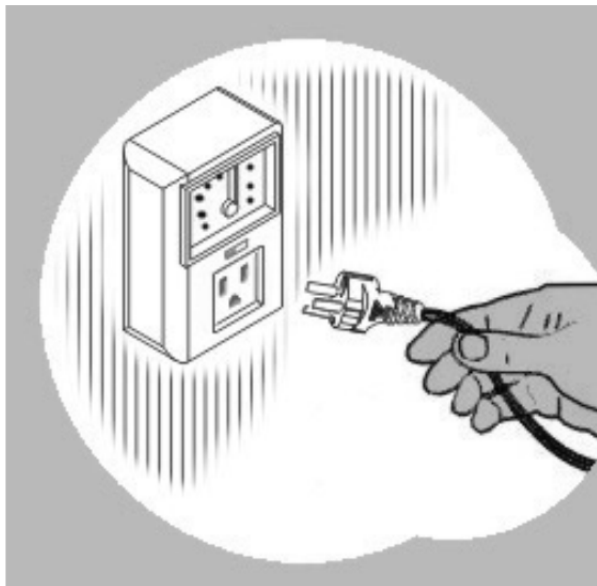
After 30 minutes of dry time attach cell



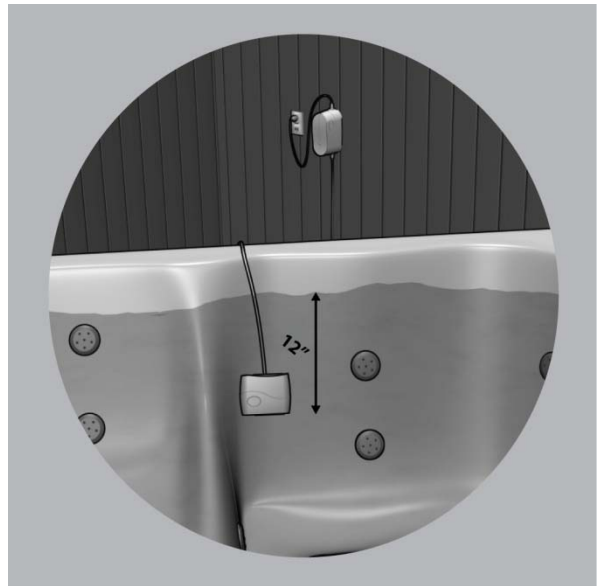
Gently pull cord from cell up over edge of spa at fold in spa cover.



Connect the cell cable to the power supply.



Plug into programmable timer (included) See **“Programming the Timer”**



Keep power supply dry, floor or wall mount (Hardware Included)  
Maintain 12 inches of water over cell

Now fill the spa with water to the level specified in your spa owner’s manual.

**Adding the Salt**

1. Add one bag (53 oz.) of Nexa Dead-Sea Minerals per 250 Gallons of spa water.
  2. Allow the minerals to completely dissolve before plugging in the Nexa Spa System.
- Note:** For every 100 gallons of spa water use 21oz. (2 cups) of Dead Sea Minerals in order to provide a salt reading of 1500 ppm Adding Dead Sea Minerals periodically is necessary as fresh water is added to spa. Water should be tested to determine existing salt level prior to adding more.

# Operating Instructions

---

## General

Nexa Spa is an automatic Natural Chlorine Generator for spa sanitization. It uses a very low concentration of sodium chloride (mineral salt), and converts it into free chlorine that treats algae and bacteria in your spa. After this treatment, the chlorine reverts back into mineral salt. This purification process continues with virtually no need to add extra sanitizing chemicals so long as chemistry balance is regularly tested and maintained.

## Water Chemistry Balance

The following table shows the recommended chemistry levels. Keeping proper levels maximizes the sanitizing effect of the free chlorine and prolongs equipment life. Test water weekly with Salt test strips and Chlorine multi-test strips, and adjust levels as necessary.

Salinity	1500 ppm
Free Chlorine	1-3 ppm
pH	7.2 – 7.6
Total Alkalinity	80-120 ppm
Calcium Hardness	150-300

If the spa needs to be shocked, use non-chlorine shock such as potassium monopersulfate (MPS), which will convert combined chlorine back to free chlorine. Stain & scale preventatives and spa clarifiers also help maintain optimal water quality.

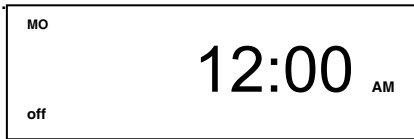
To achieve maximum water disinfection, operate the unit so the free chlorine level is maintained between 1.0 and 3.0 ppm. Test the water, and if chlorine levels are low, operate the unit longer. If chlorine levels are high, operate the unit for fewer hours per day.

**Note:** When the unit is powered and the salinity level is appropriate, the cell releases bubbles that indicate its proper operation.

Adding Dead Sea Minerals periodically is necessary as fresh water is added to spa. Water should be tested to determine existing salt level prior to adding more.

## Programming the Timer

Gently remove the plastic tab located at the battery cover on back of timer by pulling on plastic tab from under battery compartment cover. This will engage battery with timer, Clock will show 12:00 AM on the screen.



### Setting the Clock

To set the current time, hold down the CLOCK button while pressing the DAY, HOUR, and MIN buttons. To set the AM/PM, keep pressing the HOUR button until the AM/PM is correct.

Press the **MODE** button to toggle between the following modes:

- “AUTO”** – operates the Nexa Spa during the programmed times. (Default Setting)
- “OFF”** – keeps the Nexa Spa off all the time.
- “ON”** – operates the Nexa Spa continuously
- “RDM”** – operates the Nexa Spa randomly. **DO NOT USE** this mode.



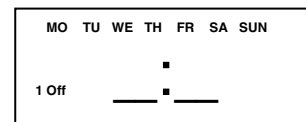
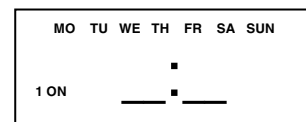
## Scheduling the Generator ON and OFF times

A good starting point for most spa's will be about 45min of Nexa Spa operating time per day, test spa after a few days of operating and adjust time settings accordingly.

**Tip:** For optimal results, set the timer to divide the total operating time between two or more periods every 24 hours (e.g. three 15 min operating times instead of 45 minutes of continuous operating time).

Press the **CLOCK** button, then press the **PROG** button. “1<sup>ON</sup>” should be displayed, and all the days of the week should be listed across the top.

- If not, press the **DAY** button until a 7-day week is displayed.
- Press the **HOUR** and **MIN** buttons to set when the generator should start operating each day. Make sure AM/PM matches your desired settings.
  - Press the **PROG** button again. “1<sup>OFF</sup>” should be displayed.
  - Press the **HOUR** and **MIN** buttons to set when the generator should stop operating each day. Make sure AM/PM matches your desired settings.
  - If you'd like more ON/OFF times per day, press PROG then repeat steps 2 through 4
  - Press clock button to end programming mode



Note: To remove a program set time go to the program, press and hold the **MODE** button then press the **PROG** button.

# Maintenance Instructions

---

The maintenance of Nexa Spa System requires minimal work, and must be carried out to maximize the system performance and lifetime. The spa water should be tested weekly for best results. Visually check the cell for scale 2-3 times a month and clean as necessary. Advanced self-cleaning technologies keep the cell cleaner than other self cleaning cells, but periodic cleanings are required.

## Caution:

- The plates of the cell are coated with precious metals and scratching them will void the warranty. Do not insert any object into the cell. See “Cell Cleaning” instructions below.

## Cell Cleaning:

1. Take the cell out of the water.
2. Disconnect the cell cable from the power supply or unplug the outlet power cord.
3. Pour either diluted muriatic acid (10% solution) or undiluted white distilled vinegar into a small bucket.

**Warning:** Be very careful when handling muriatic acid:

- When preparing diluted muriatic acid solution, always add acid to the water, NOT water to the acid.
  - Dilute 1 part of acid in 10 parts of water (10% solution).
  - Always follow the instructions of the acid manufacturer.
4. Immerse cell in the acidic solution as shown in the diagram.
  5. Wait for foaming to stop (5-10 minutes when using muriatic acid, or longer for vinegar).
  6. If you have a pool you can safely dispose of the acid solution by pouring it into your pool (helps reduce the pH level) or other suitable drainage.
  7. Rinse cell with water hose.
  8. Attach cell to underwater dual-lock stickers and reconnect cell cable to power supply.



# Troubleshooting

---

<b>Problem:</b>	<b>Possible Cause</b>	<b>What to do</b>
<b>No chlorine or low chlorine</b>	<ul style="list-style-type: none"> <li>■ The plug is not connected to the socket</li> <li>■ The timer is not on or not set to come on frequently enough.</li> <li>■ Low Salt</li> <li>■ Chemical Imbalance</li> <li>■ Worn cell</li> </ul>	<ul style="list-style-type: none"> <li>■ Connect power plug to socket</li> <li>■ Turn on timer and/or increase programming "ON" times.</li> <li>■ Test water, add Dead Sea Minerals as needed</li> <li>■ Test water &amp; adjust as needed</li> <li>■ If all above is ok cell may be worn and need replacement</li> </ul>
<b>Green Spa</b>	<ul style="list-style-type: none"> <li>■ No/Low Chlorine</li> </ul>	<ul style="list-style-type: none"> <li>■ See Above</li> </ul>
<b>Scale Build-up inside cell</b>	<ul style="list-style-type: none"> <li>■ Frequency of scale build-up depends on quality of water.</li> </ul>	<ul style="list-style-type: none"> <li>■ Clean cell as explained in "Cell Cleaning"</li> </ul>
<b>White flakes in water</b>	<ul style="list-style-type: none"> <li>■ This is harmless and normally may occur during cell self cleaning process</li> </ul>	<ul style="list-style-type: none"> <li>■ Maintain well balance water to minimize occurrence</li> </ul>

Our contact information appears on the front cover of this guide. For additional information, please visit our website [www.nexalife.com](http://www.nexalife.com) or contact us directly with any questions or comments.

For warranty service, please contact us directly with the following information:

- Model or Serial No. of the Power Pack and Cell.
- Date of purchase.
- Proof of purchase (receipt, bill of sale, cancelled check, or any other appropriate payment record).

# Limited Warranty

Models: Nexa Spa NS1

## STANDARD ONE (1) YEAR COVERAGE ON ALL SYSTEMS

This warranty applies to the models referenced above and their factory-supplied components (the "Systems"). American Swimming Pool Systems, LLC ("American SPS") and Plastic Magen ("PM") warrant the Systems to be free from defects in materials and workmanship in the manufacturing process for one (1) year from the original purchase date. Should any trouble develop during this period, call us toll-free at (866) 322-POOL (7665) to obtain a Returned Goods Authorization ("RGA") and the proper shipping address. Then, send us the defective component freight prepaid along with a copy of the original receipt with your name, address, telephone number and the assigned RGA. If inspection shows the trouble is caused by a manufacturing defect, we will repair the component (or at our option, replace with a comparable component) and ship the repaired component back to you COD.

### *EXCEPTIONS & LIABILITY LIMITATIONS*

This warranty is not transferable. American SPS, PM, and their suppliers, dealers, and distributors SHALL NOT BE LIABLE FOR INCIDENTAL OR CONSEQUENTIAL DAMAGES; DAMAGE OF ANY SORT OR NATURE RESULTING FROM ABUSE, MISUSE, NEGLIGENCE, LIGHTNING, ABNORMAL WEATHER CONDITIONS, OR ACT OF GOD; OR DAMAGE CAUSED BY IMPROPER INSTALLATION OR REPAIR. This warranty applies only to components supplied by the factory and only where such components have been installed and maintained in compliance with the respective installation and operation manuals and instructions and applicable ordinances and codes. In no event shall the liability exceed the purchase price of the product.

The express warranty above constitutes the sole and complete warranty and takes precedence over all other warranties, whether expressed or implied, including a warranty of merchantability and a warrant of fitness for a particular purpose. No sales representative, dealer, distributor, or other person is authorized to give any warranty on behalf of PM or American SPS. This warranty gives you specific legal rights, and you may also have other rights, which vary from state to state. Some states do not allow the exclusion or limitation of incidental or consequential damages or implied warranties, so the respective limitations may not apply to you.

**NOTE:** To activate your warranty, fill out the short registration form at [www.nexalife.com/registration](http://www.nexalife.com/registration). You will need the Serial numbers from the Cell and Power Pack. For your convenience, these numbers are also located on the outside box.

Cell Serial #: \_\_\_\_\_ Power Pack Serial #: \_\_\_\_\_